

# 6" 6L line

## CARATTERISTICHE COSTRUTTIVE / CONSTRUCTION FEATURES CARACTERÍSTICAS CONSTRUCTIVAS / CARACTÉRISTIQUES D'EXÉCUTION

|   |   |
|---|---|
| Corpo d'Aspirazione e di Mandata<br>Suction and delivery outlet<br>Caja de Aspiracion y de Impulsión<br>Cage d'aspiration et de refoulement | <b>AISI 304 Microfuso</b><br><b>AISI 304 Micro-casted</b><br><b>AISI 304 Microfundido</b><br><b>AISI 304 Micro-moulé</b>  |
| Valvola<br>Body<br>Valvula<br>Plat  | <b>AISI 304</b>   |
| Giranti e diffusori<br>Impellers and diffusers<br>Rodetes y difusores<br>Turbines et diffuseurs   | <b>policarbonato alimentare Lexan</b><br><b>foodstuff polycarbonate Lexan</b><br><b>policarbonato alimentario Lexan</b><br><b>polycarbonate alimentaire Lexan</b> |
| Bronzina superiore<br>Upper bushings<br>Cojinete superior<br>Coussinet de bague supérieur   | <b>gomma NBR</b><br><b>NBR rubber</b><br><b>goma NBR</b><br><b>caoutchouc NBR</b>   |
| Albero corpo pompa<br>Shaft pump side<br>Eje cuerpo bomba<br>Arbre pompe  | <b>AISI 420</b>   |
| Quantità di sabbia nell'acqua<br>Quantity of sand in the water<br>Cantidad de arena en el agua<br>Quantité de sable dans l'eau              | <b>max 400 gr/m<sup>3</sup></b>   |

## MOTORE / MOTOR / MOTOR / MOTEUR

|  |  |
|--|--|
| Asincrono 2 poli<br>Asynchronous 2 pole<br>Asíncrono 2 polos<br>Asinchrone 2 pôles                 | incapsulato non riavvolgibile<br>o riavvolgibile in bagno d'olio<br>encapsulated not rewindable<br>or rewindable in oil bath<br>encapsulado no bobinable<br>o bobinable en baño de aceite<br>encapsulé non re-enroulable<br>enroulable en bain d'huile |
| Classe di isolamento<br>Insulation class<br>Clase de aislamiento<br>Classe d'isolation             | <b>F</b>   |
| Grado di protezione<br>Protection degree<br>Grado de protección<br>protection                      | <b>IP68</b>  |
| Temperatura del liquido<br>Liquid temperature<br>Temperatura del líquido<br>Température du liquide | <b>max 30 °C</b>   |

Pompe sommerse centrifughe multistadio per pozzi da 6". Valvola di ritegno incorporata nella bocca di mandata. Flangia di accoppiamento al motore secondo la normativa NEMA. Applicazioni civili e agricole sono tra le più comuni.

Submersible multistage centrifugal pumps for 6" wells. Check valve built into the delivery outlet. Pump flange for coupling with motors are made according to NEMA standards. Most common applications are civil and agricultural.

Bombas sumergibles para pozos de 6". Válvula de retención incorporada en la boca de impulsión. Brida de conexión al motor según norma NEMA. Utilizadas en particular para aplicaciones civiles y agrícolas.

Pompes immergées centrifuges multietagées pour puits de 6". Clapet de retenue incorporé dans l'orifice de refoulement. Bride d'accouplement au moteur est exécutée selon normes NEMA. Les applications civiles et agricoles sont parmi les plus communes.

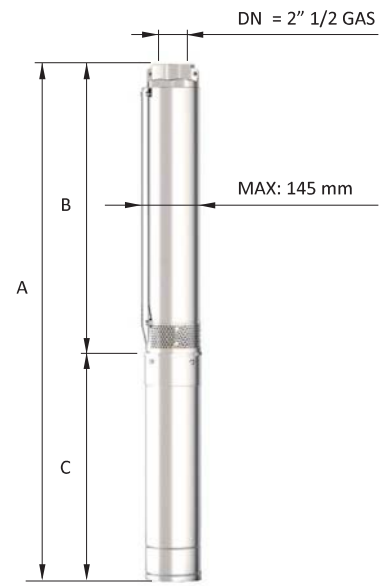


# 6" 6L 17

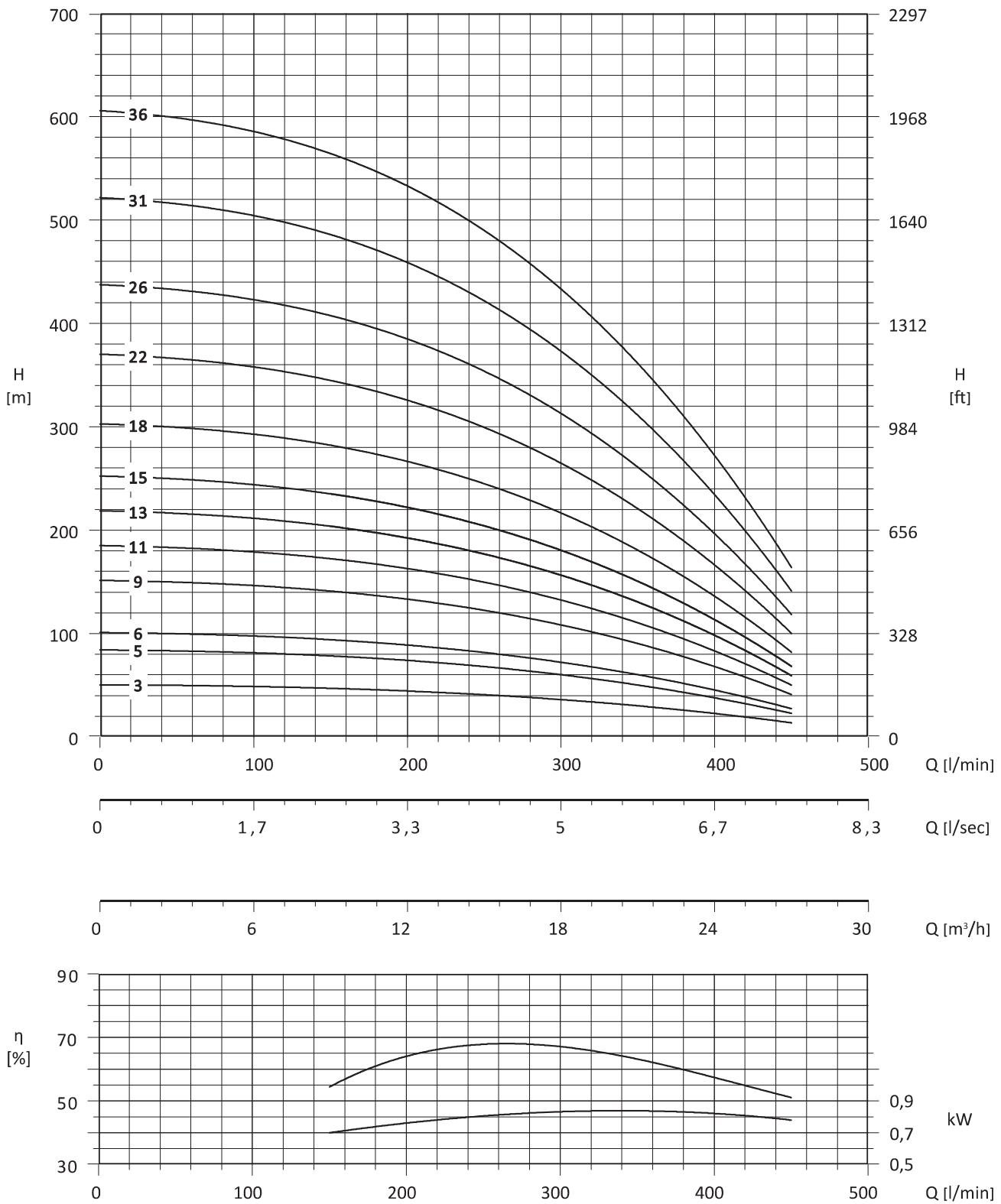
ELETTROPOMPE SOMMERSE RADIALI / RADIAL ELECTRIC PUMPS / ELECTROPOMPES RADIALES / ELECTROBOMBAS RADIALES

| Motor 50 Hz - 2900 rpm |       |       |       | Q     |     |      |      |      |     |      |      |      |
|------------------------|-------|-------|-------|-------|-----|------|------|------|-----|------|------|------|
| TYPE                   | Power |       | 400 V | l/min | 0   | 150  | 200  | 250  | 300 | 350  | 400  | 450  |
|                        | (HP)  | (kW)  | A     | l/sec | 0   | 2,50 | 3,33 | 4,17 | 5   | 5,83 | 6,67 | 7,50 |
|                        |       |       |       | m³/h  | 0   | 9    | 12   | 15   | 18  | 21   | 24   | 27   |
| 6L 17/03               | 4     | 3     | 6,7   | H[m]  | 51  | 47   | 44   | 42   | 36  | 30   | 23   | 14   |
| 6L 17/05               | 5,5   | 4     | 10    |       | 84  | 78   | 74   | 69   | 60  | 50   | 38   | 23   |
| 6L 17/06               | 7,5   | 5,50  | 12,5  |       | 101 | 93   | 89   | 83   | 72  | 60   | 45   | 28   |
| 6L 17/09               | 10    | 7,50  | 17,5  |       | 152 | 140  | 133  | 125  | 108 | 89   | 68   | 41   |
| 6L 17/11               | 12,5  | 9,20  | 21    |       | 185 | 171  | 162  | 152  | 132 | 109  | 83   | 51   |
| 6L 17/13               | 15    | 11    | 24,5  |       | 219 | 202  | 192  | 180  | 156 | 129  | 98   | 60   |
| 6L 17/15               | 17,5  | 13    | 28    |       | 253 | 234  | 221  | 208  | 180 | 149  | 113  | 69   |
| 6L 17/18               | 20    | 15    | 32    |       | 303 | 280  | 266  | 249  | 217 | 179  | 135  | 83   |
| 6L 17/22               | 25    | 18,50 | 40    |       | 370 | 343  | 325  | 304  | 265 | 218  | 165  | 101  |
| 6L 17/26               | 30    | 22    | 47,5  |       | 438 | 405  | 384  | 360  | 313 | 258  | 195  | 120  |
| 6L 17/31               | 35    | 26    | 55    |       | 522 | 483  | 458  | 429  | 373 | 308  | 233  | 143  |
| 6L 17/36               | 40    | 30    | 62,5  |       | 606 | 561  | 531  | 498  | 433 | 357  | 270  | 166  |

| Motor 50 Hz - 2900 rpm | Dimensions (mm) |        |      | Weight (kg) |    |
|------------------------|-----------------|--------|------|-------------|----|
| TYPE                   | A               | B      | C    | M           | P  |
| 6L 17/03               | 1022,5          | 465,5  | 557  | 19          | 14 |
| 6L 17/05               | 1129,5          | 532,5  | 597  | 22          | 15 |
| 6L 17/06               | 1264            | 566    | 698  | 27          | 16 |
| 6L 17/09               | 1484,5          | 666,5  | 818  | 32          | 18 |
| 6L 17/11               | 1484,5          | 733,5  | 751  | 60          | 22 |
| 6L 17/13               | 1611,5          | 800,5  | 811  | 65          | 24 |
| 6L 17/15               | 1708,5          | 867,5  | 841  | 70          | 27 |
| 6L 17/18               | 1899            | 968    | 931  | 75          | 31 |
| 6L 17/22               | 2093            | 1102   | 991  | 83          | 34 |
| 6L 17/26               | 2307            | 1236   | 1071 | 92          | 38 |
| 6L 17/31               | 2584,5          | 1403,5 | 1181 | 100         | 40 |
| 6L 17/36               | 2822            | 1571   | 1251 | 108         | 42 |



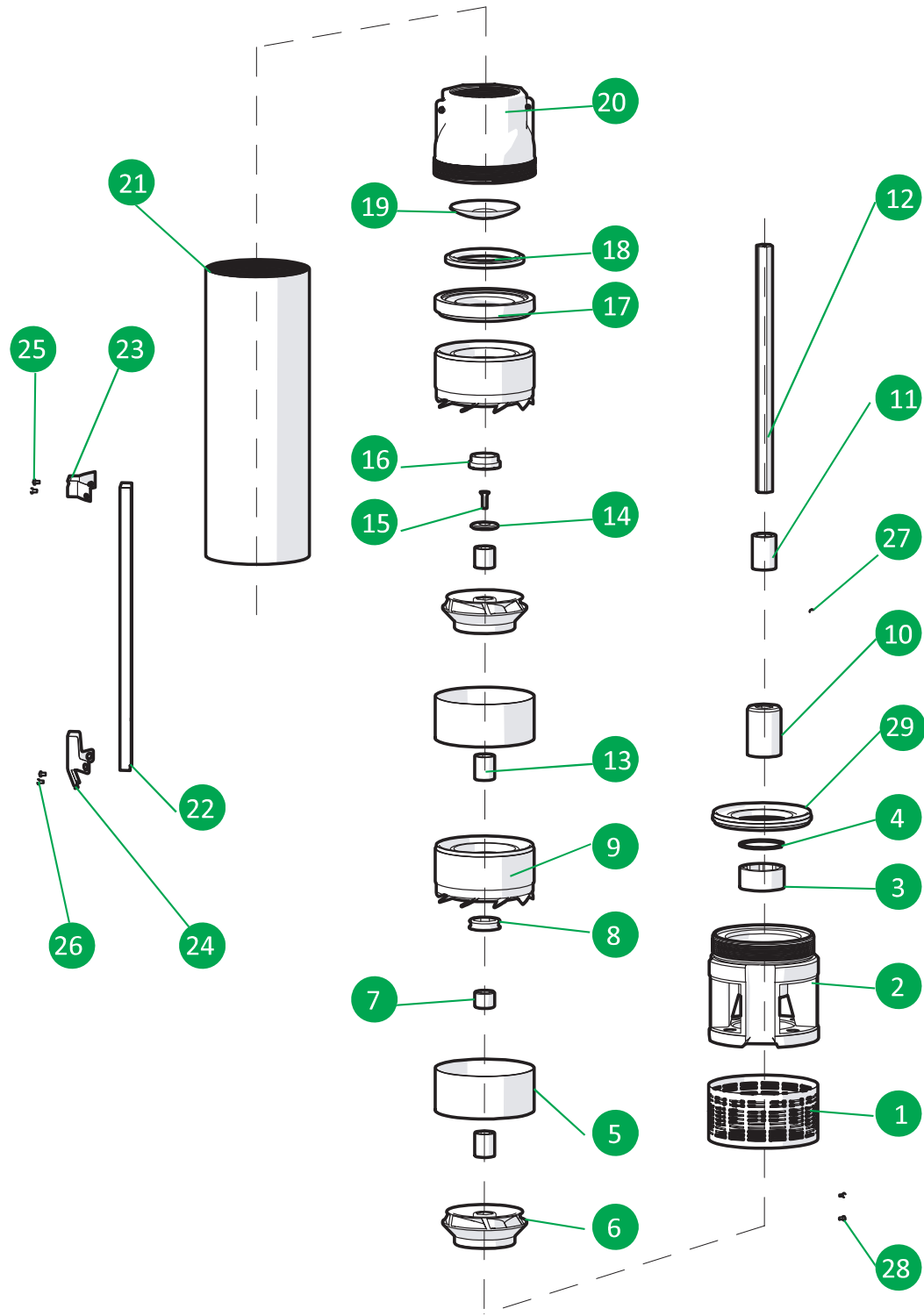
MEI ≥ 0,4 (direttiva EU No. 547/2012 - regulation EU N. 547/2012)  
 Tolleranze secondo UNI ISO 9906 livello 3B - Tolerances according to UNI ISO 9906 grade 3B



MEI ≥ 0,4 (direttiva EU No. 547/2012 - regulation EU N. 547/2012)  
 Tolleranze secondo UNI ISO 9906 livello 3B - Tolerances according to UNI ISO 9906 grade 3B

# 6" 6L line

ELETTROPOMPE SOMMERSE RADIALI E SEMIASSIALI / RADIAL ELECTRIC PUMPS AND SEMI-AXIAL  
 ELECTROPOMPE RADIALES ET SEMI AXIALES / ELECTROBOMBAS RADIALES Y SEMI AXIALES



| 6L      |   |  |                            |
|---------|---|--|----------------------------|
| N. CODE | DESCRIZIONE (ITALIANO)                      | DESCRIPTION (ENGLISH)                    | MATERIAL                   |
| 1       | SUCCHERUOLA                                 | SUCTION STRAINER                         | AISI 304                   |
| 2       | GABBIA DI ASPIRAZIONE SUCTION CAGE AISI 304 | SUCTION CAGE                             | CAST IRON                  |
| 3       | BRONZINA PER GABBIA                         | BEARING BUSH FOR SUCTION CAGE RUBBER NBR | RUBBER NBR                 |
| 4       | SEEGER BRONZINA SEEGER                      | BEARING BUSH                             | AISI 304                   |
| 5       | ELEMENTO INTERMEDIO                         | INTERMEDIATE CASING                      | AISI 304                   |
| 6       | GIRANTE                                     | IMPELLER                                 | NORYL GFN2                 |
| 7       | DISTANZIATORE INTERMEDIO                    | INTERMEDIATE SPACER                      | AISI 304                   |
| 8       | BRONZINA DIFFUSORE                          | DIFFUSER BEARING BUSH                    | RUBBER NBR                 |
| 9       | DIFFUSORE                                   | DIFFUSER                                 | NORYL GFN2 +RING AISI 304  |
| 10      | GIUNTO DI TRAINO                            | JOINT                                    | AISI 304                   |
| 11      | DISTANZIATORE PRIMA GIRANTE                 | SPACER FIRST IMPELLER                    | NORYL GFN2                 |
| 12      | ALBERO POMPA                                | PUMP SHAFT                               | AISI 420                   |
| 13      | DISTANZIATORE                               | SPACER                                   | NORYL GFN2                 |
| 14      | DISCO ACCIAIO                               | RING                                     | AISI 304                   |
| 15      | VITE  | SCREW                                    | AISI 304                   |
| 16      | CONTROSOSPENSIONE                           | COUNTERTHRUST                            | PTFE+25%CARBON             |
| 17      | ANELLO GUARNIZIONE MANDATA                  | RING GASKET VALVE                        | NORYL GFN2                 |
| 18      | GUARNIZIONE FARFALLA                        | GASKET VALVE                             | RUBBER NBR                 |
| 19      | FARFALLA                                    | CAP VALVE                                | AISI 304                   |
| 20      | MANDATA                                     | DELIVERY BOWL                            | AISI 304                   |
| 21      | CAMICIA                                     | SLEEVE                                   | AISI 304                   |
| 22      | COPRICAVO                                   | COVER CABLE                              | AISI 304                   |
| 23      | STAFFETTA SUPERIORE                         | UPPER FLANGE                             | AISI 304                   |
| 24      | STAFFETTA INFERIORE                         | LOWER FLANGE                             | AISI 304                   |
| 25      | N.2 VITI M4 X 10 PER STAFFETTA SUPERIORE    | N.2 SCREW M4X10 FOR UPPER FLANGE         | AISI 304                   |
| 26      | N.2 VITI M4 X 10 PER STAFFETTA INFERIORE    | N.2 SCREW M4X10 FOR LOWER FLANGE         | AISI 304                   |
| 27      | GRANO PER GIUNTO                            | SCREW                                    | AISI 304                   |
| 28      | N.2 VITI M4 X 8 PER SUCCHERUOLA             | N.2 SCREW M4X8 SUCTION STRAINER          | AISI 304                   |
| 29      | ANELLO RACCORDO GABBIA                      | RING FOR SUCTION CAGE                    | NORYL GFN2 + RING AISI 304 |

| N. CODE | DESCRIPTION (FRANCAIS)              | DESCRIPTION (ESPAÑOL)         | MATERIAL                   |
|---------|-------------------------------------|-------------------------------|----------------------------|
| 1       | CREPINE                             | REJILLA                       | AISI 304                   |
| 2       | CAGE D'ASPIRATION                   | CUERPO DE ASPIRACION          | AISI 304                   |
| 3       | BEARING BUSH POUR CAGE D'ASPIRATION | COJINETE CUERPO DE ASPIRACION | RUBBER NBR                 |
| 4       | SEEGER BEARING BUSH                 | SEEGER POR COJINETE           | AISI 304                   |
| 5       | ELEMENT INTERMEDIARE                | ELEMENTO INTERMEDIO           | AISI 304                   |
| 6       | ROUE                                | IMPULSOR                      | NORYL GFN2                 |
| 7       | ENTRETOISE INTERMEDIARE             | DISTANCIADOR INTERMEDIO       | AISI 304                   |
| 8       | DIFFUSEUR BEARING BUSH              | COJINETE DIFUSOR              | RUBBER NBR                 |
| 9       | DIFFUSEUR                           | DIFUSOR                       | NORYL GFN2 +RING AISI 304  |
| 10      | JOINT                               | ACOPLAMIENTO                  | AISI 304                   |
| 11      | ENTRETOISE PREMIERE ROUE            | DISTANCIADOR PRIMER IMPULSOR  | NORYL GFN2                 |
| 12      | ARBRE POMPE                         | EJE DE BOMBA                  | AISI 420                   |
| 13      | ENTRETOISE                          | DISTANCIADOR                  | NORYL GFN2                 |
| 14      | RING                                | ANILLO EN ACERO               | AISI 304                   |
| 15      | VIS                                 | TORNILLO                      | AISI 304                   |
| 16      | CONTRESUSPENSION                    | CONTRA-SUSPENSION             | PTFE+25%CARBON             |
| 17      | ANNEAU VALVE GASKET                 | JUNTA PARA VALVULA            | NORYL GFN2                 |
| 18      | BAGUE VALVE GASKET                  | JUNTA VALVULA                 | RUBBER NBR                 |
| 19      | PLAT                                | VALVULA                       | AISI 304                   |
| 20      | REFOULEMENT                         | CUERPO DE IMPULSION           | AISI 304                   |
| 21      | CHEMISE                             | CAMISA                        | AISI 304                   |
| 22      | PROTECTION CABLE                    | PARACABLE                     | AISI 304                   |
| 23      | BRIDE SUPERIEURE                    | GRAPA SUPERIOR                | AISI 304                   |
| 24      | BRIDE INFERIEURE                    | GRAPA INFERIOR                | AISI 304                   |
| 25      | N.2 VIS M4X10 POUR BRIDE SUPERIEURE | N.2 TORNILLOS GRAPA SUPERIOR  | AISI 304                   |
| 26      | N.2 VIS M4X10 POUR BRIDE INFERIEURE | N.2 TORNILLOS GRAPA INFERIOR  | AISI 304                   |
| 27      | VIS                                 | TORNILLO POR ACOPLAMIENTO     | AISI 304                   |
| 28      | N.2 VIS M4X8 POUR CREPINE           | N.2 TORNILLOS REJILLA         | AISI 304                   |
| 29      | ANNEAU FOR CAGE D'ASPIRATION        | ANILLO CUERPO DE ASPIRACION   | NORYL GFN2 + RING AISI 304 |